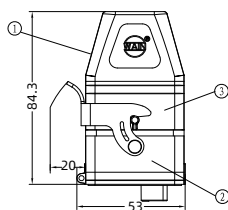


## Metal enclosure for single module



## Component

The connector is only applicable to one module, and it provides a degree of protection of IP65.

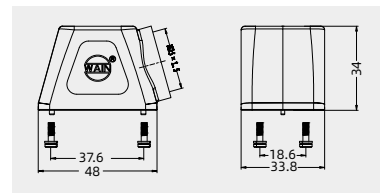
- ① Top entry of the hood;
- ② Housing with a stainless steel locking lever;
- ③ Carrier hood.

## Hoods/Housings

## Hoods, side entry



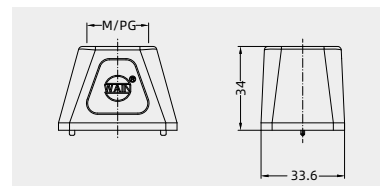
Thread	Designation	Order No.
M25	H1M-SE-M25	129 001 590 1003



## Hoods, top entry



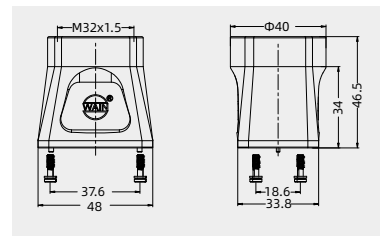
Thread	Designation	Order No.
M25	H1M-TE-M25	129 001 490 1003



## Hoods, top entry



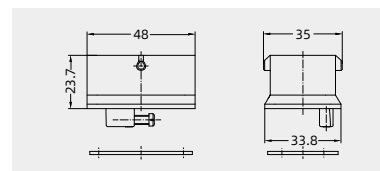
Thread	Designation	Order No.
M32	H1M-TE-M32	129 001 490 1004



## Carrier hood



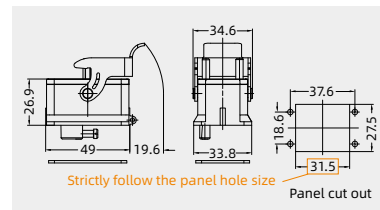
Thread	Designation	Order No.
---	H1M-MBK-2B	129 001 310 1001



## Bulkhead mounted housings



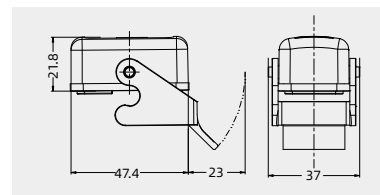
Thread	Designation	Order No.
---	H1M-BK-1L/S	129 001 325 1001



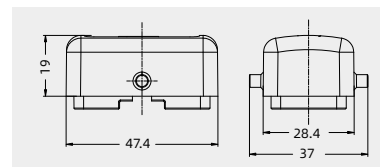
## Protection covers, plastic



Thread	Designation	Order No.
---	H1M-CV-1L/1	129 001 025 8001

Protection covers  
(for Housings), plastic

Thread	Designation	Order No.
---	H1M-CV-2B/2	129 001 010 8002



HM